

# STANLEY®



## POWER TOOLS & ACCESSORIES CATALOGUE 2025-2026

THE MEASURE OF A PRO™  
[STANLEYTOOLS.COM](http://STANLEYTOOLS.COM)

STANLEY  
**2** YEAR  
LIMITED  
WARRANTY

PERFORMANCE IN ACTION™

# THE HISTORY OF STANLEY® TOOLS

**1863**

STANLEY introduced hammers to their line-up



**1911**

STANLEY began manufacturing chisels and vises

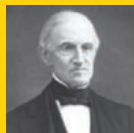
**1936**

STANLEY manufactured its 1st utility knife



**1843**

The STANLEY WORKS was founded in New Britain, Connecticut by Frederick T. Stanley.



**1870**

STANLEY began manufacturing screwdrivers and hand planes

**1920**

A new logo is introduced to symbolize the merger of the Stanley Rule & Level Company and the Stanley Works



**1854**

Begin to manufacture boxwood rules

**1876**

Miter boxes were introduced



**1930**

STANLEY made the 1st steel tape rule



**1857**

Stanley Rule & Level Company established by Henry Stanley. STANLEY begins to manufacture levels and squares

**1869**

Purchased Bailey, Chaney and Company and acquired the right to manufacture tools under Bailey's patents

**1928**

The Stanley Works broke into the electric hand tools market with an electric drill, screwdriver and bench grinder





## 1954

Time Magazine published a cover story titled "Do-It-Yourself - The New Million Dollar Hobby. STANLEY was ideally positioned to benefit from this trend and quickly developed products for this new market



## 1999

STANLEY launched the FATMAX Tape Rule and the FATMAX AntiVibe Hammer



## 2020

STANLEY launched innovative SLIM SAG platform with best in class Girth diameter

## 2024

STANLEY continues to introduce new and innovative products that change the way we work

## 1963

STANLEY opened the largest hand tool plant in the world in New Britain, CT. The same year, they introduce the PowerLock Tape Rule



## 1998

STANLEY acquired ZAG Industries Lt., an Israeli maker of plastic storage products, including tool boxes



## 2015

STANLEY newly launched power tools range



## 2023

180 Anniversary

## 2011

STANLEY launches carbide blades

## 2021

V20 Cordless Platform launched

**V20** LITHIUM ION **POWERTOOLS**

# STANLEY

STANLEY® is the longest established and largest hand tool manufacturer in the world. Since 1843, STANLEY® has become a leading name in hand tool industry; we've set the standard for excellence in everything we do. No company on earth has a stronger or more compelling history of delivering the hardworking, powerful and innovational tools that help professionals, tradesmen and consumers around the world. Whether you're a retailer looking for the best quality products to offer your customers, or a skilled user looking for the best tools, STANLEY® is here to serve you.

## STANLEY® GLOBAL PRESENCE

20+ Global manufacturing sites and labs with similar process and quality controls for consistent quality.



# AWARDS & RECOGNITION

**MORE THAN 500**  
WORLD'S FIRST SKUs



**MORE THAN 150 PATENTS**



**MORE THAN 150**  
PRESTIGIOUS AWARDS



## STANLEY WINS POPULAR MECHANICS 2021 TOOL AWARD

**MOST REPUTABLE**  
2014 WORLD'S MOST REPUTABLE  
AMERICAN COMPANIES

STANLEY BLACK & DECKER RANKED  
11TH MOST REPUTABLE

**BRAND OF THE  
YEAR 2019**

PRWEEK'S PURPOSE AWARDS

**MOST ADMIRED**  
2019 WORLD'S MOST  
ADMIRED COMPANIES

STANLEY BLACK & DECKER RANKED  
5TH MOST ADMIRED

**AMERICA'S  
BEST**

EMPLOYERS  
FOR WOMEN

**BEST  
PLACES  
TO WORK FOR  
LGBTQ EQUALITY  
DIVERSITY**

CORPORATE EQUALITY  
INDEX

**BEST  
OUTLOOK FOR GLOBAL  
CULTURE & PLACES  
TO WORK**

COMPARABLY

**#28**

U.S. REPTRAK  
MOST REPUTABLE  
COMPANIES

REPUTATION  
INSTITUTE

**WORLD'S  
BEST EMPLOYERS**

FORBES

**WORLD'S  
TOP**

FEMALE-FRIENDLY  
COMPANIES

FORBES

**#1**  
**WORLD LEADER**  
IN TOOLS INDUSTRY

**100**  
BEST CORPORATE  
CITIZENS  
3BL MEDIA

**BEST  
COMPANY**  
FOR LEADERSHIP,  
DEVELOPMENT  
& HAPPINESS  
COMPARABLY

**4TH**  
CONSECUTIVE YEAR  
DOW JONES SUSTAINABILITY  
WORLD INDEX

**#1**  
**WORLD LEADER**  
IN ENGINEERED  
FASTENING SYSTEMS

**14**  
TOOL AWARDS  
POPULAR  
MECHANICS

**46**  
PRODUCTS NAMED  
PRO TOOL  
INNOVATION AWARDS

**BEST**  
RIDING LAWN  
MOWERS  
BOB VILA

**BEST**  
WORKPLACE FOR  
INNOVATORS  
FAST COMPANY

**60**  
COUNTRIES  
GLOBAL  
PRESENCE

**5TH**  
CONSECUTIVE  
YEAR MOST JUST  
COMPANIES  
JUST CAPITAL

**#30**  
100 MOST  
SUSTAINABLE  
COMPANIES  
BARRON

**AMERICA'S**  
MOST RESPONSIBLE  
COMPANIES  
NEWSWEEK

**CLEAN200**  
ON THE LIST  
CORPORATE KNIGHTS

**6TH**  
WATER CHANGE  
A-LIST  
CDP

**11TH**  
CONSECUTIVE YEAR  
DOW JONES SUSTAINABILITY  
NORTH AMERICA INDEX

**9 YEARS**  
ON CLIMATE  
CHANGE A-LIST  
CDP



# TOTAL CARE

## WE ARE COMMITTED TO EXCELLENCE IN OUR TOOLS AND OUR SUPPORT

Total Care establishes more direct and effective engagement with customers and channel partners. Our goal is to give you an added value experience, and to increase your customers' satisfaction with Stanley Black & Decker by providing more engaged support.



**SALES AND  
AFTER SALES  
SUPPORT**



**ORIGINAL  
PARTS**



**2 YEARS  
WARRANTY**



**GREAT SERVICE  
NETWORK**



**INFORMATION**



**OMNICHANNEL  
SUPPORT**

# STANLEY

## SERVICE

### CONVENIENCE

At the heart of the STANLEY 5 star service promise are 5 star service centers which are conveniently located throughout the country, with specialists always available to answer any questions whether you are on or off the job site.

### SPEED

Having your tools back in action in the fastest time possible is our prime objective. Subject to parts availability, most repairs should not take long time in the workshop and for those smaller urgent repairs we provide a "while-u-wait" service.

### QUALITY

Highest Quality is assured with STANLEY factory trained technicians carrying out all repairs with all work being backed by our 90 day warranty. Each STANLEY repair comes with our personal "satisfaction tag" listing all the work done and a STANLEY contact telephone number should you be less than 100% happy with the repair.

### GENUINE PARTS

All parts used in repairs are original, ensuring both the highest quality and a perfect fit every time.

### ONLINE SERVICE

[www.2helpU.com](http://www.2helpU.com) provides information on STANLEY After Sales Services, including STANLEY authorized service center locations some frequently asked questions, technical Information, spare part details and warranty policy. You can also contact us directly via the website.

## [www.2helpU.com](http://www.2helpU.com)

Not all STANLEY service centers are 5 star rated. Those that are not may not be able to provide all services available above but will display in-store a detailed list of their selected services.





**STANLEY**  
**2 YEAR**  
**LIMITED**  
**WARRANTY**

STANLEY is confident of the quality of its products and offers an outstanding warranty for customers. We have identified a need amongst our end-users for a lengthier warranty policy.

Therefore, we offer a 2 Year Warranty on STANLEY powertools against faulty materials or workmanship. Terms & Conditions apply\*.

In order to honor your warranty, proof of purchase and warranty card must be provided.

Latest Warranty Terms and Conditions are available from [www.2helpU.com](http://www.2helpU.com) or consult your local distributor, authorized service center or local STANLEY office for more details.

STANLEY reserves the right to review and amend its warranty policies, periods and product eligibility without notice as STANLEY considers appropriate.





# CONTENTS

---

## **03 CORDLESS LITHIUM-ION TOOL**

### **04 V20 SYSTEM**

07 - CORDLESS POWER TOOLS

### **10 BATTERY**

10 - CHARGER

### **11 DRILL**

12 - ROTARY DRILL

12 - PERCUSSION DRILL

14 - OTHERS

### **15 METALWORKING**

16 - SMALL ANGLE GRINDER

### **16 CHOP SAW**

### **17 CONCRETE WORKING**

18 - ROTARY HAMMER

19 - DEMOLITION HAMMER

### **21 CONSTRUCTION & WOOD WORKING**

22 - SAW

24 - WOODWORKING

26 - OTHERS

### **27 POWER TOOLS ACCESSORIES**

28 - DRILLING AND SCREWDIVING

30 - CUTTING AND GRINDING WHEEL

### **30 COATED FLAP WHEELS**

31 - SDS PLUS CHISEL BITS

### **37 AUTHORIZED SERVICE CENTER**



# POWER TOOLS

STANLEY has a full range of power tools, accessories and hand tools to suit the needs of the professional tradesman to get their job done.

## PRODUCT RANGE

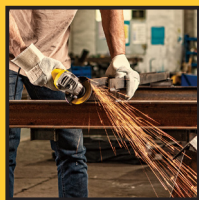
- Drill & Fastening
- Grinder & Chop Saw
- Hammer
- Cordless Tools
- Construction Saw
- Wood Working

## VALUED TRADESMAN & APPLICATIONS

- Construction
- Commercial and Industrial
- Renovation
- Facility Installation
- Metal Fabrication



## THE CONSTRUCTION SOLUTIONS WITH STANLEY POWER TOOLS - FOR ALL JOB SITES



**1** Cutting Rebar;  
Grinding Welding Lines  
**Small Angle Grinder**  
**SG7100/SG5100**



**2** Driving Screws On  
Window Frame & Drill  
Holes In Wood Frame  
**6mm 300w Rotary Drill**  
**SDR3006**



**3** Drill Holes Into  
Masonry  
**13mm Percussion  
Drill**  
**STDH7213**



**4** Drill Holes In Concrete  
For Rebar Planting  
And Paving Wood Floor  
**2kg 26mm Hammer**  
**SHR263**



**5** Slotting On Wall;  
Cutting Ceramic Tile  
**Tile Cutter**  
**STSP125**



**6** Install Furniture  
**V20 Cordless Drill Driver**  
**SCD700D2K**



**7** Driving Screw Into  
Window Frame  
**10.8V Impact Driver**  
**SCI12152**



**8** Cutting Pipes  
**Reciprocating Saw**  
**STEL365**



**9** Cutting Rebars, Steel  
Beams, Angle Iron  
**Chop Saw**  
**SSC22**



**10** Plane Wood Surface  
Planer  
**STEL630**



# CORDLESS LITHIUM-ION TOOL

STANLEY cordless drills are designed for strong performance, quality and precision. The lithium-ion range also boasts about their compact size and light weight. Well suited for challenging drilling and screw driving tasks, the range is essential for the tradesman.



PERFORMANCE IN ACTION™

## V20 SYSTEM

**WITH THE NEW  
V20 SYSTEM  
DO YOUR BEST WORK  
POWERFUL  
CORDLESS TOOLS  
1 INTERCHANGEABLE BATTERY\***



IMPROVED  
BATTERY  
TECHNOLOGY



LONGER  
BATTERY  
LIFE



MINIMAL SELF  
DISCHARGE



NO MEMORY  
EFFECT

\*The new V20 battery can be used in all new tools.

**SBD715D2K - SCD700D2K  
SCD711C2K - SBI810D2K**

**The New LITHIUM ION Batteries V20 offers all the performance you need for a long work day, because you need to trust the proper functioning of your tools.**



**NEW SYSTEM  
V20  
LITHIUM ION**



### SBD715D2K-B1 V20 BRUSHLESS HAMMER DRILL CORDLESS



**V20  
LITHIUM ION**

**32,300  
BPM**

**60  
NM**

**2.0  
Ah**



- Brushless motor technology for improved power efficiency and longer runtime
- Integral battery state of charge indicator for convenient monitoring of battery charge levels
- Powerful hammer action provides up to 32,300 BPM for efficient drilling into masonry
- Powerful motor providing up to 1,900 RPM and 60Nm of torque for efficient drilling and screwdriving into wood, metal and plastic
- 15 clutch settings to control fastener driving depth
- 2-Speed gearbox with speeds of 0-600/0-1,900 RPM for greater control over the job
- Keyless chuck for easy bit changes
- Integral LED worklight for improved visibility

#### SPECIFICATIONS

Torque	60 Nm, 16 positions
Speed	0-600 / 0-1.900 Rpm
Impact rate (Bit per minute)	0-32.300 Bpm
Chuck	13 mm
Battery	2 Ah ( 2 unit )
Led Light	Yes
State of charge	Yes (Battery)
Drilling capacity	Metal 13mm / Wood 30mm / Concret 13mm
Weight (Compact and lightweight)	1,2 Kg

### SCD700D2K-B1 V20 CORDLESS DRILL DRIVER



**V20  
LITHIUM ION**

**1,500  
RPM**

**50  
NM**

**2.0  
Ah**



- Integral battery state of charge indicator for convenient monitoring of battery charge levels
- Powerful motor providing up to 1,500 RPM and 50Nm of torque for efficient drilling and screwdriving into wood, metal and plastic
- 24 clutch settings to control the fastener driving depth
- 2-Speed gearbox with speeds of 0-400/0-1,500 RPM for greater control over the job
- Integral LED worklight for improved visibility
- Keyless chuck for easy bit changes

#### SPECIFICATIONS

Torque	50 Nm
Speed	0-400 / 0-1.500 Rpm
Battery	2 Ah ( 2 unit )
Chuck	13 mm
Led Light	Yes
State of charge	Yes (Battery)
Drilling capacity	Metal 13mm / Wood 35mm
Weight (Compact and lightweight)	1,2 Kg

## SCD711C2K-B1 V20 CORDLESS HAMMER DRILL



**V20**  
LITHIUM ION

25.500  
BPM

50  
NM

1.5  
Ah



- Integral battery state of charge indicator for convenient monitoring of battery charge levels
- Powerful hammer action provides up to 25.500 BPM for efficient drilling into masonry
- Powerful motor providing up to 1,500 RPM and 50Nm of torque for efficient drilling and screwdriving into wood, metal and plastic
- 24 clutch settings to control the fastener driving depth
- 2-Speed gearbox with speeds of 0-400/0-1.500 RPM for greater control over the job
- Keyless chuck for easy bit changes
- Integral LED worklight for improved visibility

### SPECIFICATIONS

Torque	50 Nm, 22 positions
Speed	0-400 / 0-1.500 Rpm
Impact rate (Bit per minute)	0-25.500 Bpm
Chuck	13 mm
Battery	1.5 Ah ( 2 unit )
Led Light	Yes
State of charge	Yes (Battery)
Drilling capacity	Metal 13mm / Wood 35mm / Concrete 13mm
Weight (Compact and lightweight)	1,3 Kg

## SBI810D2K-B1 V20 BRUSHLESS CORDLESS IMPACT DRIVER



**V20**  
LITHIUM ION

3.500  
BPM

180  
NM

2.0  
Ah



- Brushless motor technology for improved power efficiency and longer runtime
- Integral battery state of charge indicator for convenient monitoring of battery charge levels (SBI810D2K)
- Powerful motor providing up to 2.800 RPM, 3.500 BPM and 170Nm of torque for driving larger fasteners and other high torque applications
- Quick release chuck for easy one-handed bit changes
- Integral LED worklight for improved visibility

### SPECIFICATIONS

Torque	180 Nm
Speed	0-2.800 Rpm
Impact rate (Bit per minute)	0-3.500 Bpm
Chuck	6,35 Hex
Battery	2 Ah ( 2 unit )
Led Light	Yes
State of charge	Yes (Battery)
Weight (Compact and lightweight)	1 Kg

## SBW910M1K-B1 20V MAX V20 BRUSHLESS 1/2 Inch IMPACT WRENCH



**V20**  
LITHIUM ION

0-2.800  
RPM

3.500  
IPM

280  
NM

4.0  
Ah



- Brushless motor technology for improved power efficiency and longer runtime
- Integral battery state of charge indicator for convenient monitoring of battery charge levels
- Powerful motor providing up to 3.500 IPM and 280Nm of torque for nut setting & other high torque applications
- 1/2 inch hog ring anvil for easy socket changes
- Integral LED worklight for improved visibility

### SPECIFICATIONS

Max. Torque	280 Nm
Breakaway Torque	400 Nm
Speed	0-2.800 Rpm
Impact rate (Bit per minute)	0-3.500 IpM
Anvil	½" Hog Ring
Battery	4 Ah ( 1 unit )
Led Light	Yes
Tool Size (LxH)	143 x 200 mm
State of Charge	YES (battery)
Charger	2 Ah
Charge Time	120 mins
Weight (Compact and lightweight)	1 Kg



## SBC550M2K-B1 V20 BRUSHLESS CORDLESS CIRCULAR SAW 7-1/4 Inch



**V20**  
LITHIUM ION

5,000  
RPM



185 mm



- Powerful motor provides up to 5,000 RPM's for easy work of everyday cross and rip cuts.
- Tool-free beveling shoe pivots up to 56° for angled cuts.
- LED work light illuminates cut-line makes cutting easier in lower light conditions.
- Direct connection dust port allows quick, secure connection for cleaner, safer jobsite. Can be directly connected with SCV002 wet and dry vac.
- Electronic brake stops blade within seconds for safety and productivity.
- Bevel detent for easier adjustment of most common used angles (22.5 and 45 degrees).
- Contoured over-moulded handle for comfort.

### SPECIFICATIONS

Voltage	20 V
Speed	0-5,000 Rpm
Blade Size	185 mm
Deep of Cut @ 45°   90°	50   65 mm
Max. Cutting	Wood 65 mm / Metal 10mm
Pendulum	3
Blade Side	Right
Tool Free Bevel	Yes
State of Charge	Yes (on battery)
Battery	4 Ah ( 2 unit )
Weight	3,2 Kg

## SCJ600-B1 V20 CORDLESS JIGSAW - BARE UNIT



**V20**  
LITHIUM ION

- Variable speed trigger ranging from 0-2,500 SPM's
- 3 settings to adjust cut aggressiveness for various materials and applications
- Adjustable shoe for 45° bevel cuts
- Contoured over-molded handle for comfort
- Tool-free blade change - compatible with both T & U blades

2,500  
SPM



Tool Free



### SPECIFICATIONS

Voltage	20 V
Variable Speed	0-2,500 /Spm
Max. Cutting	Wood 65 mm   Metal 10 mm
Pendulum	3
Tool free blade	Yes
State of Charge	Yes (battery)
Weight	2,6 Kg

## SCN618-B1 20V 18GA NAILER - BARE UNIT



**V20**  
LITHIUM ION

UP TO  
425 18Ga  
Nails with one  
2Ah V20 battery

100  
Nails Magazine  
Capacity

50J  
Drive Energy

- Tool free design open the nose easily to remove nail
- Non-marring nose avoids marks on surfaces and provides accurate nailing shots
- Multi-functional led lights illuminate workspace and also work as low battery and stall indicator
- Tool free depth adjustment for quick and easy set up
- Powerful motor drives up to 425 18ga brad nails with STANLEY UPPERCLASS v20 2.0ah battery
- Added comfort contoured over-molded handle
- Convenient belt hook for easy transportation and storage

### SPECIFICATIONS

Voltage	20 V
Battery Type	Li-Ion
Actuating Mode	Sequential
Magazine Angle	Straight
No load Speed	9,000 /min
Drive Energy	Approx. 50 J
Angle	Straight
Weight (bare tool)	2,43 Kg

## CORDLESS POWER TOOLS

### SCI121S2-B1 10.8 V IMPACT DRIVE



- High performance motor delivering 0-2.500RPM for faster work completion
- Powerful torque (110Nm) for effective screwdriving applications in metal and concrete
- Best in class durability compared to tradesman competition
- Compact design & lightweight for optimum handling in tight spaces
- Integrated LED for illumination of dark spaces

0-2.500  
RPM

0-3.200  
IPM

110  
NM

1,25  
Ah

#### SPECIFICATIONS

Voltage	10,8 V
Battery Size	2 pcs x 1,5 Ah Li-Ion
Chuck Capacity	6,35 mm
No Load Speed	0-2.500 Rpm
Max. Torque	110 Nm
Impact Rate	0-3.200 Ip/m
LED Light	Yes
Charger	1,25 Ah / Hour
Weight	1,0 Kg
Packaging	Soft Bag

### SCH121S2-B1 10.8 V Hammer Drill



- Class leading drilling speed : 0-400/ 1500 RPM
- Powerful torque (26Nm) for drilling and screw driving
- 20 torque settings for precise control
- Powerful motor for longer durability
- Switch durability, chuck durability for minimum down time
- Durable battery and charger
- Compact design and light weight for easy handling
- Rubber handle for long duration fatigue free usage
- Variable switch on handle for better control
- LED for working in dark places

0-400/  
0-1.500  
RPM

0-22.500  
BPM

26  
NM

1,5  
Ah

#### SPECIFICATIONS

Voltage	10,8 V
Battery Size	2 pcs x 1,5 Ah Li-Ion
Chuck Capacity	10 mm
No Load Speed	0-400 / 0-1.500 Rpm
Max. Torque	26 Nm
Impact Rate	0-22.500 Bpm
Clutch / Torque Positions	20+3
LED Light	Yes
Weight	1,1 Kg
Packaging	Soft Bag

## SCH10D2K-B1 12V BRUSHED HAMMER DRILL (2x2.0Ah + 1.5Amp + KITBOX)

NEW



30  
NM

2.0  
Ah



- Improved torque, durability and reduced vibration for higher productivity
- Lightweight tower-up battery pack designed for maximum comfort
- 30Nm max torque delivering class leading controlled performance
- Rubber overmould handle for increased comfort
- 20 torque positions & 2 speed selector for precision in multiple applications
- Battery status indicator lets you know battery status to work efficiently
- LED light to perform jobs efficiently in low-light spaces
- Improved 2.0Ah battery for 33% longer runtime

### SPECIFICATIONS

Voltage	12 V
No Load Speed	0-400 / 0-1.500 Rpm
Impact Rate	0-6.000 / 0-22.500 lpm
Max. Torque	30 Nm
Clutch Setting	20+3
Max. Drilling Capacity	Wood 20 mm   Steel 10 mm   Masonry 8 mm
2 speed gear	Yes
Variable speed trigger	Yes
Chuck Type/ Capacity	Single Sleeve / 10 mm
LED Light	Yes
Battery Indicator	Yes
Cell Capacity	2,0 Ah
Charger	1,5A/ 80min

## SCD10D2K-B1 12V BRUSHED DRILL DRIVER (2x2.0Ah + 1.5Amp + KITBOX)

NEW



30  
NM

2.0  
Ah



- Improved torque, durability and reduced vibration for higher productivity
- Lightweight tower-up battery pack designed for maximum comfort
- 30Nm max torque delivering class leading controlled performance
- Rubber overmould handle for increased comfort
- 20 torque positions & 2 speed selector for precision in multiple applications
- Battery status indicator lets you know battery status to work efficiently
- LED light to perform jobs efficiently in low-light spaces
- Improved 2.0Ah battery for 33% longer runtime

### SPECIFICATIONS

Voltage	12 V
No Load Speed	0-400 / 0-1500 Rpm
Max. Torque	30 Nm
Clutch Setting	20+3
Max. Drilling Capacity	Wood 20 mm Steel 10 mm
2 speed gear	Yes
Variable speed trigger	Yes
Chuck Type/ Capacity	Single Sleeve / 10 mm
LED Light	Yes
Battery Indicator	Yes
Cell Capacity	2,0 Ah
Charger	1,5A/ 80min

## SCI10D2K-B1 12V BRUSHED IMPACT DRIVER KIT (2x2.0Ah + 1.5Amp + KITBOX)

NEW



110  
NM

2.0  
Ah



- Improved torque, durability and reduced vibration for higher productivity
- Lightweight tower-up battery pack designed for maximum comfort
- 110Nm max torque delivering class leading controlled performance
- Rubber overmould handle for increased comfort
- Battery status indicator lets you know battery status to work efficiently
- LED light to perform jobs efficiently in low-light spaces
- Improved 2.0Ah battery for 33% longer runtime

### SPECIFICATIONS

Voltage	12 V
No Load Speed	0-400 / 0-2600 Rpm
Max. Torque	110 Nm
Max Impact Rate	0-3400 Bpm
Variable speed trigger	Yes
LED Light	Yes
Battery Indicator	Yes
Cell Capacity	2,0 Ah
Charger	1,5A/ 80min





**IMPROVED BATTERY TECHNOLOGY**

**STANLEY®**  
**FATMAX®**

**V20**  
**LITHIUM ION**

**NEW 20V MAX STANLEY® FATMAX® V20 CORDLESS SYSTEM**

## BATTERY



SKU NAME	SPECIFICATION
SB204-B1	20V 4.0Ah
Experience gives confident STANLEY fatmax 4.0ah battery	



SKU NAME	SPECIFICATION
SB202	20V 2.0Ah
Experience gives confident STANLEY fatmax 2.0ah battery	



SKU NAME	SPECIFICATION
SCB12S	12V 1.5Ah
Compatible with all STANLEY® 10.8 / 12 V MAX* tools. Lightweight and compact	



SKU NAME	SPECIFICATION
SB10D-B1	12V 2.0Ah TOWER UP BATTERY

## CHARGER



SKU NAME	SPECIFICATION
SC200	20V 2.0Ah
The new V20 LITHIUM-ION Battery Chargers offer all the performance you need for a long day's work, because you need to rely on the smooth running of your tools.	



SKU NAME	SPECIFICATION
SC122-B1	12V Cup Charger
Suitable use for 10.8V/12V battery	



SKU NAME	SPECIFICATION
SC101-B1	12V 1.5A TOWER UP CHARGER
To charge the SB10D-B1 battery	

# DRILL

Tradesman tough jobs require extremely durable and powerful tools. STANLEY's heavy duty keyed and keyless drills assist you with their high quality in every single situation. A metal gearcase and a powerful square motor provide you with robustness and higher performance. Well designed brushes lengthen the life-time of your tool dramatically.



PERFORMANCE IN ACTION™



## ROTARY DRILL

### SDR3006-B1 6 mm 300W ROTARY DRILL



300  
Watt

0-4.500  
RPM

- High performance motor delivering 0-4.500 RPM for faster work completion
- Best in class durability compared to tradesman competition
- Compact design & lightweight for optimum handling in tight spaces
- Variable speed with reverse & forward function ensures control & accuracy based on application requirements

#### SPECIFICATIONS

Power Input	300 W
Chuck Capacity	6 mm
No Load Speed	0-4.500 Rpm
Variable Speed	Yes
Lock-On Switch	Yes
Cable Length	2 m
Drilling Capacity	Wood 15 mm Steel 6,5 mm
Weight	0,95 Kg
Dimension	200 × 165 × 60 mm
Packaging	Carton

### STEL101-B1 10 mm 400W ROTARY DRILL



400  
Watt

0-2.700  
RPM

- High performance motor delivering 0-2.700 RPM for faster work completion
- Best in class durability compared to tradesman competition
- Compact design & light weight for optimum handling in tight spaces

#### SPECIFICATIONS

Power Input	400 W
Chuck Capacity	10 mm
No Load Speed	0-2.700 Rpm
Variable Speed	Yes
Lock-On Switch	Yes
Cable Length	2 m
Drilling Capacity	Wood 20 mm
Weight	10 Kg
Dimension	200 × 165 × 60 mm
Packaging	Carton

## PERCUSSION DRILL

### SDH600-B1 13 mm 600W PERCUSSION DRILL



600  
Watt

0-2.900  
RPM

0-49.300  
BPM

- Best in class rotary & impact rate for most effective work output
- Lightweight and compact & ergonomic design bring best control
- Speed dial for consistent torque/speed
- Lock-on switch for one hand control and user safety

#### SPECIFICATIONS

Power Input	600 W
Chuck Capacity	13 mm
No Load Speed	0-2.900 Rpm
Impact Rate	0-49.300 Bpm
Forward And Reverse	Yes
Speed Dial	Yes
Chuck	Keyed & Keyless
Drilling Capacity	Wood 25 mm Concrete 13 mm Steel 13 mm
Weight	1,75 Kg
Packaging	Carton

## SDH600KM-B1 13 mm 600W HAMMER DRILL WITH 120PCS MECHANIC SET



- 600W powerful motor to get job done fast and easily
- Fast rotary and impact speed delivers high working efficiency
- Compact and ergonomic design for optimum control
- Speed dial consistent torque and speed on different applications



### SPECIFICATIONS

Power Input	600 W
Chuck Capacity	1.5-13 mm
No Load Speed	0-2.900 Rpm
Impact Rate	0-49.300 Bpm
Forward And Reverse	Yes
Speed Dial	Yes
Chuck	Keyed & Keyless
Drilling Capacity	Wood 25 mm Concrete 13 mm Steel 13 mm
Weight	1,8 Kg
Packaging	Kit Box

600  
Watt

2.900  
RPM

49.300  
BPM



## SDH600KP-B1 13 mm 600W HAMMER DRILL WITH 120PCS ACC SET



- List of items:
- 1pc 60mm Magnetic extension bar"
- 4pcs wood drill :4/5/6/8mm"
- 5pcs masonry drill :4/5/6/8/10mm"
- 4pcs metal drill :2/3/4/5/6mm"
- 9pcs 25MM Screwdriver bits + 1Pc Adaptor SL: 3/4/5/6.
- PH0/1/2/2/3 + AD 1PC Bit Seat (For10Pcs Bit Packing)
- Screw set with small box
- 3m tape measure
- 1pc Art Knife
- 1PC Hammer
- 1Pc pincer plie
- 8pcs hex wrench (1.5/2/2.5/3/3.5/4/5/6)

### SPECIFICATIONS

Power Input	600 W
Chuck Capacity	1.5-13 mm
No Load Speed	0-2.900 Rpm
Impact Rate	0-49.300 Bpm
Forward And Reverse	Yes
Speed Dial	Yes
Chuck	Keyed & Keyless
Drilling Capacity	Wood 25 mm Concrete 13 mm Steel 13 mm
Weight	1,8 Kg
Packaging	Kit Box

600  
Watt

2.900  
RPM

49.300  
BPM



## SDH600KV-B1 13 mm 600W PERCUSSION DRILL VALUE PACK



- Value Pack including:
- SDH600
- A Cross Screwdriver
- Pincer Plier
- Hammer
- Art Knife
- 4mm metal drill
- 5mm metal drill
- 6mm metal drill
- 8mm metal drill
- 6mm masonry drill
- 8mm masonry drill
- 4mm wood drill
- 5mm wood drill
- 6mm wood drill
- 8mm wood drill

### SPECIFICATIONS

Power Input	600 W
Chuck Capacity	1.5-13 mm
No Load Speed	0-2.900 Rpm
Impact Rate	0-49.300 Bpm
Forward And Reverse	Yes
Speed Dial	Yes
Chuck	Keyed & Keyless
Drilling Capacity	Wood 25 mm Concrete 13 mm Steel 13 mm
Weight	1,8 Kg
Packaging	Kit Box

600  
Watt

2.900  
RPM

49.300  
BPM



## SDH700KV0-B1 13 mm 700W PERCUSSION DRILL VALUE PACK



- Value Pack including:
  - SDH600
  - Cross Screwdriver
  - Pincer Plier
  - Hammer
  - Piler
  - Art Knife
  - Tape Measure
  - 4mm metal drill
  - 5mm metal drill
  - 6mm metal drill
  - 8mm metal drill
  - 6mm masonry drill
  - 8mm masonry drill
  - 10mm masonry drill
  - 4mm wood drill
  - 5mm wood drill
  - 6mm wood drill
  - 8mm wood drill

### SPECIFICATIONS

Power Input	700 W
Chuck Capacity	1.5-13 mm
No Load Speed	0-2.900 Rpm
Impact Rate	0-49.300 Bpm
Forward And Reverse	Yes
Speed Dial	Yes
Chuck	Keyed & Keyless
Drilling Capacity	Wood 25 mm Concrete 13 mm Steel 13 mm
Weight	1,8 Kg
Packaging	Kit Box

700  
Watt

2.900  
RPM

49.300  
BPM



## STDH7213-B1 13 mm 720W PERCUSSION DRILL



- Robust 720 watt motor to get your heavy duty job done easily
- High working efficiency due to excellent rotary & impact speed
- Durable metal gear housing for the long unit life
- Speed dial for all different applications

### SPECIFICATIONS

Power Input	720 W
Chuck Capacity	13 mm
No Load Speed	0-3.000 Rpm
Speed Dial	Yes
Chuck	Keyed
Reverse Mode	Yes
Drilling Capacity on Wood	Wood 32 mm Concrete 13 mm Steel 13 mm
Weight	2,5 Kg
Packaging	Carton

720  
Watt

0-3.000  
RPM

## OTHERS

### SDR1400-B1 1400W MUD MIXER



- Delivering 2 speed variable speed with soft start for efficient mixing
- Power – Appropriate motor torque
- Multi-use for tradesman environment
- D-shape twin-handle design & lightweight

### SPECIFICATIONS

Power Input	1.400 W
Speed Mode	2 Speed
No Load Speed	0-480, 0-800 Rpm
Variable Speed	Yes
Tool Fitting	M14 X 2
Mixing Paddle	140 mm
Mixture Volume	120 L
Cable Length	2 m
Soft Start Function	Yes
Soft Grip on Handle	Yes
Accessories	1pc two-section paddle 2pcs 22# wrench
Weight	3,5 Kg
Packaging	Carton

1.400  
Watt

0-480  
0-800  
RPM



# METALWORKING

Resulting in faster material removal while grinding and greater accuracy & comfort while cutting, the STANLEY high performance metal working tools have been developed to combine excellent power to weight characteristics with outstanding ergonomics. They deliver the versatility, power and life that is demanded by a tradesman.



PERFORMANCE IN ACTION™

## SMALL ANGLE GRINDER

### SG7100-B1 100 mm 750W SLIMLINE SMALL ANGLE GRINDER



- Super slim body just 179mm gripping girth
- Steel cut gear set ensures premium noise and vibration level
- Powerful motor with higher output for better working efficiency
- Higher load bearing to prevent tool damage in tougher application

**750  
Watt**
**12.000  
RPM**

#### SPECIFICATIONS

Power Input	750 W
Disc Diameter	100 mm
Tool Girth	179 mm
No Load Speed	12.000 Rpm
Cable Length	2,5 m
Weight	1,3 Kg

### SG5100-B1 100 mm 580W SLIMLINE SMALL ANGLE GRINDER



- Super slim body just 179mm gripping girth
- Steel cut gear set ensures premium noise and vibration level
- Powerful motor with higher output for better working efficiency
- Higher load bearing to prevent tool damage in tougher application

**580  
Watt**
**12.000  
RPM**

#### SPECIFICATIONS

Power Input	580 W
Disc Diameter	100 mm
Tool Girth	179 mm
No Load Speed	12.000 Rpm
Cable Length	2,1 m
Weight	1,3 Kg

## CHOP SAW

### SSC22-B1 2200W CHOP SAW



- 2200W powerful motor with high working efficiency
- Heavy duty guard for durability and user protection
- Horizontal handle for better comfort

**2.200  
Watt**
**3.800  
RPM**

#### SPECIFICATIONS

Power Input	2.200 W
No Load Speed	3.800 Rpm
Max. Disc Diameter	355 mm
Lock-On Switch	Yes
Guard	Half / Full
Weight	15,5 Kg

### STEL861 500W DIE GRINDER



- 500W Motor
- On/Off Switch
- Easy Access to Brushes for Quick Replacement
- Rubber Coated for Longer Useful Life

**500  
Watt**
**27.000  
RPM**

#### SPECIFICATIONS

Power Input	500 W
No Load Speed	27.000 Rpm
Switch Type	Toggle
Spindle Size	M15
Collet Size	6 mm
Cable Length	3 m
Weight	2 Kg



# CONCRETE WORKING

Highly durable and best-in-class performance – two traits of the STANLEY Concrete range. While the full range of rotary hammers with the SDS-Plus chuck configuration provides excellent power to weight ratio, the demolition hammers with a choice between SDS-Max and Hex Chuck is designed to give comfort during long usages. The tile cutter comes also with a wet kit variant.



PERFORMANCE IN ACTION™

# ROTARY HAMMER

## SHR264KA-B1 26 mm 2Kg ROTARY HAMMER QUICK CHANGE CHUCK



### SPECIFICATIONS

Power Input	800 W
Chuck Capacity	26 mm
Chuck Type	QCC SDS-Plus
No Load Speed	0-1.250 Rpm
Drilling Mode	Hammer Drill, Rotary Drill, & Chipping
Impact Energy	3,4 J
Impact Rate	0-4.670 Bpm
Quick Change Chuck	Yes
Variable Speed	Yes
Lock-On Switch	Yes
Weight	2,7 Kg
Packaging	Kit Box

- STA54002. SDS Hammer 5mm x 110mm \* 1
- STA54012. SDS Hammer 6mm x 110mm \* 2
- STA54022. SDS Hammer 8mm x 110mm \* 1
- STA54027. SDS Hammer 10mm x 110mm \* 1
- STA54401. SDS PLUS POINT chisel 14 mm x 250 mm \* 1
- 6 pcs Stanley SDS-Plus Bits

## SHR263KA-B1 26 mm 3 MODE SDS-PLUS HAMMER WITH 6 STANLEY BITS



6pcs Stanley SDS-Plus Bits



### SPECIFICATIONS

Power Input	800 W
Chuck Capacity	26 mm
Chuck Type	SDS-Plus
No Load Speed	0-1.150 Rpm
Drilling Mode	Hammer Drill, Rotary Drill, & Chipping
Impact Energy	3,4 J
Impact Rate	0-4.300 Bpm
Variable Speed	Yes
Lock-On Switch	Yes
Weight	2,6 Kg
Packaging	Kit Box

- STA54002. SDS Hammer 5mm x 110mm \* 1
- STA54012. SDS Hammer 6mm x 110mm \* 2
- STA54022. SDS Hammer 8mm x 110mm \* 1
- STA54027. SDS Hammer 10mm x 110mm \* 1
- STA54401. SDS PLUS POINT chisel 14 mm x 250 mm \* 1



## DEMOLITION HAMMER

### STHM5KHV-B1 17 mm HEX 5Kg DEMOLITION HAMMER



#### SPECIFICATIONS

Power Input	1.010 W
Chuck Capacity	17 mm
Chuck Type	HEX
Impact Energy	8,5 J
Impact Rate	0-2.900 Bpm
Anti-Vibration Handle	Yes
Cable Length	3,5 m
Weight	6,1 Kg
Packaging	Kit Box

- 1010W Powerful Motor Delivers Outstanding Chipping And Chiseling Performance
- Anti-Vibration System For Low Vibration And More Comfort
- Rubber Coated Back Handle Design For Improved Comfort In Use

## STHM5KHV 5KG HEX DEMOLITION HAMMER



**1010W POWERFUL MOTOR**

**SUPERIOR DURABILITY**

**ERGONOMIC DESIGN & FEATURES**

## STHM10K-B1 10Kg SDS-MAX DEMOLITION HAMMER



### SPECIFICATIONS

Power Input	1.600 W
Chuck Type	SDS-Max
Impact Energy	25 J
Impact Rate	900-1.890 Bpm
Lock-On Switch	Yes
Switch Type	Trigger
Chisel Positions	12
Weight	10,5 Kg
Packaging	Kit Box

- Powerful 1600W Motor For Light-Heavy Duty Demolition, Chipping & Chiseling Applications
- SDS Max Chuck For Easy Accessory Availability
- Rubber Grip For Comfortable Long Duration Usage

## STSP125A-B1 1320W 125 mm TILE CUTTER



- Powerful 1320W Motor For Highest Working Efficiency
- Optimized 13000 RPM For High Cutting Efficiency
- 125mm Capacity Guard For All Job-site Applications
- Optimized Gear Set For Less Vibration, Lower Noise & Longer Life Span

### SPECIFICATIONS

Power Input	1.320 W
Wheel Diameter	125 mm
No Load Speed	13.000 Rpm
Max. Depth of Cut	41 mm
Cable Length	2,5 m
Weight	3,1 Kg
Packaging	Carton



# CONSTRUCTION SAW & WOOD WORKING

Cutting through a variety of materials, the STANLEY Saw range takes on the strain of cutting and sawing with ease. The range is designed to provide a powerful, precise and comfortable experience to the user.

STANLEY woodworking range also caters to routing, planning and sanding. While durability is a given in any STANLEY tool, the router boasts of controlled power, Planers with high depth of cut and safety and Sanders providing smooth results every time, all the time.



PERFORMANCE IN ACTION™

## SAW

### SM16-B1 254 mm 1650W MITRE SAW



- 1650W motor offer enough torque for heavy duty application on wood & aluminum cutting
- Precise design and manufacture offer excellent accuracy
- Durable motor keep long term application use
- Compact size and lightweight easy transform

#### SPECIFICATIONS

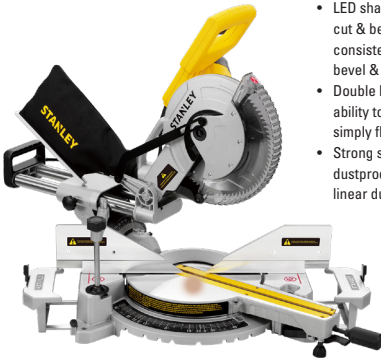
Power Input	1.650 W
No Load Speed	4.800 Rpm
Max. Blade Diameter	254 mm
Max. Diameter	140x70 mm
Weight	10,5 Kg
Cut Line Guidance	LED Shadow
Mitre (Max.Positions)	L-47° R-52°
Cross Cut	H75 x W140mm
Mitre Cut	H75 x W95mm
Bevel Cut	H48 x W140mm
Compound	H48 x W95mm

1,650  
Watt

4,800  
RPM

10  
INCH

### SM18-B1 254 mm 1650W SLIDING MITRE SAW



- LED shadow cut line for accurate cut & better illumination consistent cutting accuracy at bevel & mitre cut
- Double bevel design has the ability to cut 2 beveled edges by simply flipping the saw
- Strong sliding rail structure with dustproof feature ensures rail linear durability

#### SPECIFICATIONS

Power Input	1.800 W
No Load Speed	4.800 Rpm
Max. Blade Diameter	254 mm
Cut Line Guidance	LED Shadow
Bevel Cut Range	Double Bevel
Miter Cut Range	Left 0°- 47° Right 0°- 52°
Lock-On Button	Yes
Weight	18,6 Kg
0° x 0° Cross Cut Capacity	H92xW28   H80xW310 mm
45° x 0° Mitre Cut Capacity	H92xW190   H80xW210 mm
0° x 45° Bevel Cut Capacity Left	H47xW285   H45xW31 mm
45° x 45° Compound Cut Capacity	H47xW190   H45xW21 mm
0° x 45° Bevel Cut Capacity Right	H35xW285   H25xW31 mm
45° x 45° Compound Cut Capacity	H35xW19   H25xW210 mm
Brake Time	< 5 Seconds

1,800  
Watt

4,800  
RPM

10  
INCH

### SST1801-B1 254 mm 1800W TABLE SAW WITH FRAME STAND



- Self-aligning fence design ensures high cut accurate
- Dovetail shape fence slot helps fence setup without any deviation
- Smart bi-scale reading
- Tool free extendable table
- Over 150 hours consistent durable heavy load life

#### SPECIFICATIONS

Power Input	1.800 W
No Load Speed	4.800 Rpm
Max. Blade Size	254 mm
Max. Bench Size	560*680 mm
Max. Extension Bench Size	560*1.040 mm
RIP Capacity	660 mm
Max Cutting Depthat 90°   45°	80   50 mm
Parallel Guide	Self Aligning
Stand Type	Frame
Weight	27,2 Kg

1,800  
Watt

4,800  
RPM

10  
INCH



## SC16-B1 1600W 190 mm CIRCULAR SAW



- Best-in-Class 1600W motor with optimized transmission to deliver highest productivity amongst all Tradesman units
- State-of art design, compact size and light weight
- Robust & Optimized design at motor, transmission, guard and base, ensures 2x durability than existing STANLEY circular saw

1,600  
Watt

5,500  
RPM

### SPECIFICATIONS

Power Input	1,600 W
No Load Speed	5,500 Rpm
Max Disc Diameter	190 mm
Max. Cutting Depth	65 mm
Max. Bevel	45°
Weight	3,9 Kg

## SJ45-B1 450W JIG SAW



- Powerful 600W & optimum 450W powerful motors with high efficiency in its class, to ensure effective cutting on heavy load applications.
- Robust & Optimized design at motor, transmission, blade clamp and base ensures Best-in-Class durability
- Compact tool size and excellent Power to Weight ratio

450  
Watt

500-3,000  
RPM

### SPECIFICATIONS

Power Input	450 W
Variable Speed	500-3,000 Spm/min
Max. Cutting	65 mm
Pendulum	No
Stroke Length	19 mm
Blade Clamp	Keyed
Blade Type	T-Shank
Bevel Cutting	± 45 degree
Weight	1,8 Kg

## SJ60-B1 600 WATT VARIABLE SPEED JIGSAW



- Powerful 600W & optimum 450W powerful motors with high efficiency in its class, to ensure effective cutting on heavy load applications.
- Robust & Optimized design at motor, transmission, blade clamp and base ensures Best-in-Class durability
- Compact tool size and excellent Power to Weight ratio

600  
Watt

500-3,000  
RPM

### SPECIFICATIONS

Power Input	600 W
Variable Speed	500-3,000 Spm/min
Max. Cutting	75 mm
Pendulum	Yes
Stroke Length	19 mm
Blade Clamp	Keyless
Blade Type	T-Shank
Bevel Cutting	± 45 degree
Weight	1,9 Kg

## STEL365-B1 900W RECIPROCATING SAW



- TOOLED SHOE ADJUSTMENT
- Easily allows depth adjustment and extends blade life
- TWIST LOCK TOOL FREE BLADE CHANGE
- For quick and easy blade changes
- VARIABLE SPEED TRIGGER
- Maintains speed for multiple cutting tasks
- HEAVY DUTY MOTOR
- For fast cutting in a variety of applications

900  
Watt

0-3,200  
SPM

### SPECIFICATIONS

Power Input	900 W
Strokes/Min	0-3,200 Spm/min
Stroke Length	148 mm
Max. Cutting	Wood 305 mm / Steel 75 mm / PVC306 mm
Weight	3,2 Kg

## WOODWORKING

### STP18-B1 1800W THICKNESS PLANER



10.000  
RPM



- Powerful 1800W motor delivering productive solution for thickness control
- High durability long service life high-speed steel re-sharpenable blades & first carbon brush
- Large capacity & stock removal up to 12.5" Planing width & circular section cutter head for optimum depth of cut
- Precision cutting 0.4mm to 1.6mm depth adjustment settings for good accuracy
- Ease-of-use quick-change hss blades. Easy to read dual metric & imperial markings

#### SPECIFICATIONS

Power Input	1.800 W
Voltage	220-240 V
Frequency	50/60 Hz
No-load/Rated speed	10.000 Rpm
Feed Speed	7,9 m/min
Cutting Height	152 mm
Planing width	318 mm
Maximum cutting depth (For max. board width of 152 mm(6"))	3,2
Weight	27 Kg

### ST55-B1 550W LAMINATE TRIMMER



550  
Watt

35.000  
RPM

- 35,000 RPM optimized speed and high torque for quick task completion
- 550W Powerful motor with up to 700W\* max output
- High grade collet material for Accurate trimming result
- Flat head design for convenience collet and bit replacement
- Transparent base and blow feature help the working visibility
- Premium collet material for accurate trimming

#### SPECIFICATIONS

Rated Power	550 W
No Load Speed	35.000 Rpm
Collet Dimension	6,35 mm 6 mm
Soft Gel	Yes
Blow Feature	Yes
Weight	1,4 Kg

### STEL630-B1 750W PLANER



750  
Watt

16.500  
RPM

- LEFT OR RIGHT CHIP EJECTION
- Suitable for both Right or left handed usage
- 0.2MM DEPTH OF CUT SETTING
- For increased accuracy
- 3 DIFFERENT SIZED CHAMFER GROOVES
- For easy and precise shaping of wood
- 12MM MAXIMUM REBATE DEPTH
- Broadens the applications

#### SPECIFICATIONS

Power Input	750 W
No Load Speed	16.500 Rpm
Planing Width	82 mm
Planing Depth	1,6 mm
Rebating Depth	12 mm
Weight	2,7 Kg

## SS24-B1 240W 1/4 Inch SHEET SANDER



240  
Watt

16.000  
OPM

- 240W Powerful motor with higher sanding efficiency to provide optimal removal rate in different materials
- 16000/min higher speed with low vibration to deliver optimal sanding result to End-user
- Compact design with lower height to give better balance and control
- Longer hanging life and first brush life ensure longest durability in class

### SPECIFICATIONS

Power Input	240 W
Orbit/Strokes	16.000 Opm
Voltage Rating	220-240 V
Orbital Diameter	1,4 mm
Sanding Pad Size	110 x 104 mm
Sanding Paper Size	140 x 115 mm

## SS28-B1 280W 1/3 Inch SHEET SANDER



280  
Watt

0-14.000  
OPM

- 280W Powerful motor with higher sanding efficiency to provide optimal removal rate in different materials
- 14000/min higher speed with low vibration to deliver optimal sanding result to End-user
- Longer hanging life and first brush life ensure longest durability in class
- Two finger trigger switch with lock-on button to ensure continuous and comfortable usage

### SPECIFICATIONS

Power Input	280 W
No Load Speed	14.000 Opm
Orbital Diameter	2 mm
Sanding Pad Size	91 x 185 mm
Sanding Paper Size	93 x 230 mm
Two-Finger Switch	Yes
Lock-On Button	Yes
Weight	1,5 Kg

## SSS310-B1 310W 1/2 Inch SHEET SANDER



310  
Watt

6.000-  
10.000  
OPM

- 310W durable motor for tradesman market Performance
- 2mm orbit diameter give orbital sander suitable for all general sanding applications Easy use
- Thumb lever clamping system holds paper fast sanding
- Dust extraction bag for a cleaner working environment Ergonomics
- Rubber handle for comfortable operation

### SPECIFICATIONS

Power Input	310 W
No Load Speed	6.000-10.000 Opm
Eccentricity	1 mm
Orbit Diameter	2 mm
Paper size	115 x 280 mm
Platten size	115 x 230 mm
Paper attachment	Thumb level clamping system

## SS30-B1 300W RANDOM ORBITAL SANDER VARIABLE SPEED



300  
Watt

0-13.000  
OPM

- 300W Powerful motor with higher efficiency for optimal removal rate in different application
- 0-13000/min variable speed with extreme low vibration to deliver optimal sanding result to End-user
- Longer product hanging life (>650hrs) and first brush life (>300hrs) ensure longest in class durability
- Compact design with lower height to give better balance and control

### SPECIFICATIONS

Power Input	300 W
No Load Speed	0-13.000 Opm
Orbital Diameter	2 mm
Sanding Pad Size	125 mm / 5"
Dust-Sealed Switch	Yes
Dust Extraction	Yes
Brake Function	Yes
Weight	1,4 Kg

## SB90-B1 900W BELT SANDER VARIABLE SPEED



900  
Watt

240-380  
RPM

- 900W Powerful Motor with higher efficiency for fast material removal and 76x533mm belt to sand big surface
- Longer product hanging life (>500hrs) and first brush life (>155hrs) ensure longest in class durability
- Two finger trigger switch with lock-on button for continuous and comfortable usage

### SPECIFICATIONS

Power Input	900 W
No Load Speed	240-380 Rpm
Sanding Belt Size	76 x 533 mm
Sanding Area	76 x 130 mm
Two Finger Switch	Yes
Lock-On Button	Yes
Weight	2,76 Kg

## OTHERS

### SP137-B1 1300W 180 mm POLISHING MACHINE



1.300  
Watt

500-3.600  
RPM

- Constant speed module with soft-start feature for smooth polish
- Powerful 1300W motor to meet requirement for auto detailer applications.
- 15% more compact and 10% lighter than the current polisher STGP1318.
- Over 200 hours working life, 2x durable than STGP1318

### SPECIFICATIONS

Power Input	1.300 W
Diameter	180 mm
No Load Speed	500-3.600 Rpm
Speed Control	Variable Speed
Handle	D type
Turning Disc Type	Hook and Loop Fasteners
Machine Length	40 mm
Weight	3.2 Kg

### STEL670-B1 2000W HEATGUN



2.000  
Watt

- Spherical Nozzle
- Two Air Flow Stages, Variable Temperature Settings To Meet Different Use Requirements
- Designed For Free-Standing Base

### SPECIFICATIONS

Power Input	2.000 W
Heat Setting	Variable
Switch Control	2 Stages
Temperature	50-450 / 90-600 °C
Air Flow	300/500 L/min
Cable Length	3 m

### STPT600-B1 600W BLOWER



600  
Watt

0-16.000  
RPM

- Enhanced Airflow for high working efficiency
- Variable speed and Light weight suitable for all applications
- Longer Durability to reduce idle time

### SPECIFICATIONS

Power Input	600 W
No Load Speed	0-16.000 Rpm
Air Volume	3.500 L/min
Cable Length	3 m
Weight	1,6 Kg
Cable Length	3 m



# POWER TOOLS ACCESSORIES



PERFORMANCE IN ACTION™

## DRILLING AND SCREWDRIVING

### STA7221-XJ 16 PIECE DRILLING AND SCREWDRIVING SET METRIC



With a variety of accessories to perform the most common application, Stanley screwdriving sets offers the right performance to get the job done. the cases are designed to maintain the different accessories organized and prevent tool lost.

#### • Features & Benefits

Sets assortment selected to attend the most common uses.

Case developed to protect and organize the accessories.

#### • Product Specifications

Multiple application from screwdriving to drilling into different materials

#### • Includes

- 5 Titanium Steel Bits Fast 2mm, 3mm, 4mm, 5mm, 6mm,
- 3 concrete drill bits 5mm, 6mm, 8mm,
- 7 tips for screwing crv 25mm (assorted models),
- 1 magnetic extender for screwing

### STA88546-XJ STANLEY 50PCS DRILLING & SCREWDRIVER SET



With a variety of accessories to perform the most common application, Stanley screwdriving and drilling sets offers the right performance to get the job done. the cases are designed to maintain the different accessories organized and prevent tool lost.

#### • Features & Benefits

Sets assortment selected to attend the most common uses.

Case developed to protect and organize the accessories.

#### • Product Specifications

Multiple application from screwdriving and drilling into different materials

#### • Includes

- Wood Drill Bit: 3mm x 2, 4mm, 5mm, 6mm, 8mm
- Metal Drill Bit: 1.5mm x 2, 2mm, 2.5mm, 3mm, 3.5mm, 4mm, 5mm, 6mm
- Masonry Drill Bit : 4mm, 5mm, 6mm, 7mm, 8mm, 10mm
- Screwdriver Bit Phillips/Plus (+): Ph1, Ph2 x 2, Ph3
- Screwdriver Bit Slot/Minum (-): SL4, SL6, SL7.2
- Screwdriver Bit Pozidriv/Bintang: Pz1 x 2, Pz2 x 2, Pz3
- Screwdriver Bit Torx: T15, T20, T25, T30
- Screwdriver Bit Hex: HX3, HX4, HX5, HX6
- 1x Magnetic Holder
- Screwdriver Bit Connector: 4mm, 5mm, 6mm, 7mm, 8mm, 10mm

### STA88548-XJ STANLEY 100PCS DRILLING & SCREWDRIVER SET



#### • Features & Benefits

Sets assortment selected to attend the most common uses.

Case developed to protect and organize the accessories.

#### • Product Specifications

Multiple application from screwdriving and drilling into different materials

With a variety of accessories to perform the most common application, Stanley screwdriving and drilling sets offers the right performance to get the job done. the cases are designed to maintain the different accessories organized and prevent tool lost

#### • Includes

- 13 Metal Drill Bits TITANIUM - 1.5mm - 2mm - 2.5mm - 3mm (2pcs) - 3.5mm - 4mm - 5mm (2pcs) - 5.5mm - 6mm - 7mm
- 5 Wall Drill Bits - 3mm - 5mm - 6mm - 8mm - 10mm
- 13 Wood Drills Bits - 3mm (2pcs) - 3.5mm - 4mm - 4.5mm - 5mm (2pcs) - 6mm - 6.5mm - 7mm - 7.5mm - 8mm
- 10 Phillips cross thread inserts 25 mm 3x PH1 - 5xPH2 - 2xPH3
- 9 Pozidriv 25 mm 2x PZ1 - 5xPZ2 - 2xPZ3 cross screwing inserts

- 7 Screwdriver inserts Flat cut 25 mm 1x SL4 - 3xSL5 - 3xSL6 - 2xSL7,2
- 12 Torx screwdriver bits 25 mm 2xT10- 2xT15-2xT20-2xT25-2xT27-2xT30
- 2 Hexagonal 25 mm screwdriver bits HEX 3 - HEX 4
- 7 Screwdriver inserts Flat cut 50 mm 1x SL4 - 2xSL5 - 2xSL6 - 2xSL7,2
- 4 Phillips cross screw inserts 50 mm 1x PH1 - 2xPH2 - 1xPH3
- 3 Torx screwdriver bits 50 mm 1xT10-1xT15- 1xT20
- 7 Sockets for hexagonal screwdriver 5-6-8- 10-11-12-13 mm
- 1 Magnetic bit holder 1 piece
- 1 Countersink 1 piece
- 4 Hole saws mm 32 - 38 - 44 - 54
- 1 Post for hole saws

# SCREWDRIVER INSERT BIT SET



- Made from chrome vanadium steel
- Recommended for manual applications in multibit screwdrivers

- Made from chrome vanadium steel
- Recommended for manual applications in multibit screwdrivers

- Made from chrome vanadium steel
- Recommended for manual applications in multibit screwdrivers

STANLEY SKU	Description	Box Qty
68-070-23	9 pcs Screwdriver Insert Bit Set	6/36

STANLEY SKU	Description	Box Qty
68-071-23	29 pcs Screwdriver Insert Bit Set	6/48

STANLEY SKU	Description	Box Qty
68-075-23	36 pcs Screwdriver Insert Bit Set	6/36

## STA60490-XJ 31 PIECES COLOUR RING

NEW



The STANLEY® 31 Piece 25mm Colour Code Screwdriver Bit Set with Magnetic Bit Holder is designed for professionals seeking durability and precision. Each bit is forged and ground for long life and precision machined to ensure a perfect fit, while the colour-coded rings allow for easy identification of different bit types. Featuring a 1/4"/6.35mm hex fitment, these bits are ideal for screwdriving applications with both corded and cordless drills. The included magnetic bit holder boasts a strong magnet to securely hold 25mm screwdriver bits, enhancing efficiency and ease of use. Packaged in a compact, robust case with a belt clip, this set offers convenient transport and storage, making it an essential addition to any toolkit.

- **Includes**
  - (3) 25mm Screwdriver Bits (S2) 1x PH1, 1x PH2, 1x PH3
  - (4) 25mm Screwdriver Bits (S2) 1x PZ1, 2x PZ2, 1x PZ3
  - (4) 25mm Screwdriver Bits (S2) 1x SL 3, 1x SL4, 1x SL5, 1x SL6
  - (12) 25mm Screwdriver Bits (S2) 2x T10, 2x T15, 2x T25, 2x T27, 2x T30, 2x T40
  - (7) 25mm Screwdriver Bits (S2) 1x TH10, 1x TH15, 1x TH20, 1x TH25, 1x TH27, 1x TH30, 1x TH40
  - (1) Magnetic Bit Holder



# CUTTING AND GRINDING WHEEL

**FOR FAST CUTTING**  
**HIGH PERFORMANCE ALUMINUM OXIDE GRAIN**  
Long life and high material removal

**HIGH QUALITY FIBER GLASS**  
No Trade off to Safety (EN12413 qualified)

**LESS VIBRATION, LESS HEATING OF MATERIAL**  
Easier to control cutting

**APPLICATION**  
For cutting stainless steel and steel



Item No.	Diameter (mm)	Bore (mm)	Thickness (mm)	Quantity
STA8060SUT	100	16	1.0	25
STA8060B50	100	16	1.0	50

## STANLEY CUTTING AND GRINDING WHEELS

Item No.	Diameter (mm)	Bore (mm)	Thickness (mm)	Quantity
STA4500-IN	100	16	6	10
STA8011R	355	25.4	3	10



# COATED FLAP WHEELS

**FOR METAL GRINDING AND POLISHING**  
**RESISTANT, DURABLE ZIRCONIUM OXIDE GRAIN**  
Long life and high material removal

**APPLICATION**  
For sanding, finishing and sharpening steel and stainless steel



Item No.	Diameter (mm)	Bore (mm)	Grit (mm)	Quantity
STA8226F	100	16	60	5
STA8228F	100	16	120	5



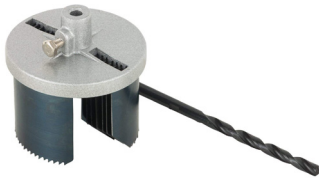
# SDS PLUS CHISEL BITS

High grade toughened steel shank design for optimum durability in heavy-duty demolition task, higher wear resistance and increased service life. Innovative cutting geometry for improved material removal rate. Specially toughened steel with state-of-the-art heat treatment process , ensures consistent chiselling and demolition performance. For masonry, concrete, stone floor and wall tiles



Item No.	Shank type	Shape	Length (mm)	Quantity
STA54401	SDS Plus	Point	250	1
STA54411	SDS Plus	Flat 40mm	250	1

# STA81005-XJ 7PCS HCS HOLES AW



The stanley hole drills are made of high carbon steel (hcs). holes for cutting holes in wood, drywall. a guide drill is included with each set.

- **Features & Benefits**  
Good quality standard drilling holes for wood work.
- **Product Specifications**  
Wood
- **Includes**  
SET: 25mm, 32mm, 38mm, 45mm, 50mm, 56mm, 62mm

# STA24192-XJ HSS PLANER BLADE

NEW



- The STANLEY® HSS Planer Blades help your planer get the job done well. Crafted from carbide, these blades outlast the industry standard and are double sided and re-sharpenable for continual performance. High speed steel is suitable for cutting all woods. The reversible blades ensure longer life.

## SPECIFICATIONS

Blade Length	82 mm
Blade Thickness	1,1 mm
Blade Width	5,5 mm













# LAYANAN PURNA JUAL GARANSI STANLEY POWER TOOLS KINI **2 TAHUN**



## Ketentuan Garansi

### 1. Garansi terbatas Stanley

Garansi terbatas selama 2 tahun semenjak tanggal pembelian :

- Gratis penggantian suku cadang sebanyak 2 kali selama 2 tahun.

Catatan : Masa garansi akan habis setelah

penggantian suku cadang atau periode garansi yang diberikan  
(yang tercapai terlebih dahulu).

### 2. Syarat – syarat pengajuan klaim

Berikut dokumen yang harus dilengkapi pada saat pengajuan klaim ke  
Authorized Service Center :

- Kartu garansi
- Nota pembelian
- Unit produk beserta aksesoris dan kelengkapan

### 3. Pengecualian

Ketentuan garansi tidak berlaku pada:

- Kerusakan yang disebabkan oleh penggunaan suku cadang yang tidak asli.
- Suku cadang yang diganti secara rutin seperti: Carbon brush, Cord, Plug, Chuck, dll.
- Aksesoris dan Attachment.
- Unit produk yang sudah dimodifikasi
- Unit produk yang pernah diperbaiki oleh teknisi tidak resmi
- Kerusakan yang disebabkan oleh benda asing, zat asing, kecelakaan, penggunaan unit produk yang tidak sesuai petunjuk, kelalaian, dll.

\* Untuk poin-poin yang tidak dijelaskan di atas, mohon untuk berkoordinasi dengan  
pihak Authorized Service Center.

Untuk memanfaatkan garansi Anda, bukti pembelian dan pengisian kartu garansi yang benar harus disertakan.



<https://id.stanleytools.global/en>



[support@stanleytools.co.id](mailto:support@stanleytools.co.id)



+1 210-693-1486  
(Bahasa Indonesia)



+62 855 7467 9105  
(Hanya aktif pada jam kerja)

# AUTHORIZED SERVICE CENTER

## Ambon

CV. Bob Motor Ambon  
Jl. Cendrawasih, Gang Merpati No.3,  
Kelurahan Rijali, Sirimau, Kota Ambon,  
Maluku 97123  
Tel.: (+62) 911 – 349164  
Hp.: 0821 9791 5549

## Balikpapan

PT. Bumi Bangun Perkasa  
Jl. Indrakila No. 2 RT. 2 Gn. Samarinda  
Baru Kec. Balikpapan Utara, Kota  
Balikpapan Kalimantan Timur 76125  
Tel.: (+62) 542 – 4651551  
Email: teknis@bumibangun.com

## Bandung

PT. Haskar Inter Global / Toko Hong Kie  
Jl. Station Timur No. 36 kelurahan Braga,  
kecamatan sumur Bandung, kota Bandung  
40111  
Tel.: (+62) 22 – 4263402 / 4263489  
Fax.: (+62) 22 – 4237161  
Email: haskarig@yahoo.co.id

PT. Perkakasku Multi Cemerlang  
Jl. Jend. Ahmad Yani 350  
Bandung, Jawa barat 40271  
Tel.: (+62) 22 – 7271396 / 7271332  
Hp.: 0811 239 6685  
Fax.: (+62) 22 – 7214547

## Batam

PT. Continental Industry Supply  
Komp. Lytech Industrial Park  
Block F No. 9, Batam Centre, Batam  
Tel.: (+62) 778 – 7494850 / 7490777 /  
7490888  
Fax.: (+62) 778 – 7494849  
Email: wira@continental-supp.com  
yance@continental-supp.com ;  
Web.: www.continental-supp.com

## Bau Bau

PT. Sinar Mitra Bangunan /  
Izzie Home  
Jl. Sultan Hassanudin No 5 Bau-Bau  
Pulau Buton, Sulawesi Tenggara  
Tel.: (+62) 402 – 2821413 / 2821851  
Fax: (+62) 402 – 2822035  
Email: smb@izziehome.com

## Bekasi

PT. Vins Teknik Internus  
Jl. Boulevard Raya, Ruko Sentral Niaga 5  
No.18 & 22 Grand Galaxy, Bekasi Selatan,  
Indonesia  
Tel.: 021 - 82725538  
Hp.: 087786413043  
Web.: www.vinsteknik.com  
Email: vinsteknikinternusa@gmail.com

## Cikarang

Toko Multi Mulya Teknik  
Jln Raya Cibirusah no 15/16 Desa  
sukaresmi, lippo Cikarang,  
Kabupaten Bekasi  
Tel.: (+62) 8971822 / 8971823

## Denpasar

Toko Mulia Teknik  
Jl. Gatot Subroto No. 388,  
Kec. Denpasar Utara - Bali, 80111  
Hp.: 0851 0281 6699  
Email: muliateknikgatsu345@gmail.com

## Depok

CV. Hanna Teknik  
Jl. Tole Iskandar No. 3AKel. Sukamaju,  
Kec. Cilodong Kota Depok 16415  
Tel.: (+62) 21 – 8372 9245  
WA / Hp.: 0857 1011 3535  
Email: sales@hannateknik.com

## Duri

PT. Profita Abadi  
Jl. Lintas Duri - Dumai KM. 4 Kulim Balai  
Makam - Bathin Solapan, Bengkalis  
Hp.: 0813 7108 8893

## Jakarta

PT. Yuan Wira Perdana  
LTC Glodok Lt. GF1 Blok A26 No. 8-9  
Jl. Hayam Wuruk Kel. Mangga Besar -  
Jakarta Barat  
Tel.: (+62) 21 – 22686872  
Hp.: 0812 9695 0631  
Email: service.powertools@yuanwira.com

PT. Mitra Teknik Elektrindo  
Komplek Ruko Glodok Plaza Blok A No. 15  
Taman sari Glodok - Jakarta Barat  
Tel.: (+62) 21 – 6250606 / 6250609  
Hp.: 0815 1357 1915 / 0819 2800 1111  
Email: mitrateknikelektrindo@gmail.com  
ssdmte@gmail.com  
adefirman27@yahoo.com

## Kendari

Toko Pelita Indah  
Jl. MT Haryono no.95D-E Kendari Sulawesi  
tenggara  
Tel.: (+62) 401 – 3196605  
Email: pelitaindah.kendari@gmail.com

## Makassar

CV. Zidan Al Fatih  
Jl. Aroepala Perum Taman Yasmin E2/6,  
Kota Makassar, Sulawesi Selatan  
Hp.: 0811 412 3404  
Email: zidanalfatih@yahoo.com

## CV. Zidan Al Fatih

Jl. Racing Centre / Prof. Abdurrahman  
Basalamah. No.2, Kec. Panakukang, kel.  
Karampuang, kota Makassar. K.Pos 90231  
Hp.: 0811 412 3404  
Email: zidanalfatih@yahoo.com

## Medan

DW Hardware  
Jl. Pandu, Ps. Baru, Kec. Medan Kota, Kota  
Medan, Sumatera Utara 20154  
Tel.: (+62) 61 – 4571768

## PT. Faedah Teknik

Jl. Tjong Yong Hian (d/h Jl. Bogor No.40),  
Medan  
Tel.: 061-4568886  
Hp.: 0822 2108 668  
Fax.: 061 - 4569174  
Email: faedah.medan@gmail.com

PT. Karya Inti Mentari  
Jl. Mesjid No. 48 Helvetia Medan Sunggal  
Sumatera Utara  
Hp.: 0811 6222 383

## Pangkep

Harapan Global Nusantara  
Jl.Kemakmuran KM51 Kab.Pangkajene &  
Kepulauan,Sulawesi Selatan.  
Hp.: 0813 8929 1212

## Samarinda

PT. Subur Makmur Bangunan  
Jl. Gatot Subroto No.62-68, Bandara,  
Kec. Sungai Pinang, Kota Samarinda,  
Kalimantan Timur 75123  
Tel.: (+62) 541 – 201384

PT. Karya Inti Total Anugerah  
Mangkupalas, Jl. Pattimura No. 67  
Samarinda Seberang, Samarinda City, East  
Kalimantan 75133  
Tel.: (+62) 541 – 7266443  
Hp : 0822 9779 9998  
Email : karya.inti.total.anugerah@gmail.  
com

## Semarang

PT. Inter Prima Machinery  
Ruko Taman Niaga Blok B No 2, JL. RM  
Hadisoebeno Sosrowardoyo, BSB City,  
Mijen - Kota Semarang 50212  
Tel.: (+62) 24 – 3532 0003

## Surabaya

PT. Ratna Asia  
Komplek Permata, Jl. Raden Saleh No.4,  
Bubutan, Surabaya, Jawa Timur  
Hp.: 0822 4593 9609

PT. RTT Power Indonesia  
Jl. Rajawali No. 70, Krembangan Sel, Kec.  
Krembangan, Surabaya  
Hp.: 0895 6159 0144  
Email: toolsteknik92@gmail.com

## Tangerang

PT. Bahana Andalan Pasti  
Ruko Ice Business Part BSD - Blok D-01  
Jl. BSD Grand Boulevard, Pagedangan,  
Kec. Padegangan - Kab Tangerang Banten  
15339  
Tel.: (+62) 21 – 2222 9278  
Hp.: 0895 3663 59800  
Email: tools@ptbap.id

## Teknikmart

Jl.Raya Merdeka No.207 RT003 RW001  
Kel.Sukajadi Kec. Karawaci Kota  
Tangerang Banten 15113  
Tel.: (+62) 21 – 5958 3900

## Yogyakarta

Qhome Service Center  
Jl. Raya Janti Ring Road Timur No. 96  
Kanoman, RT. 006 / RW. 020  
Banguntapan - Yogyakarta  
Hp.: 0822 9929 9297



# STANLEY®

PERFORMANCE IN ACTION™



+62 855 7467 9105  
(Hanya aktif pada jam kerja)



support@stanleytools.co.id



+1 210 693 1486  
(Bahasa Indonesia)



<https://id.stanleytools.global/en>



Stanley Tools ID



@stanleytools\_id



Stanley Tools ID